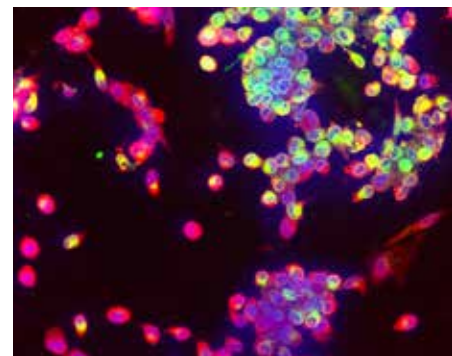
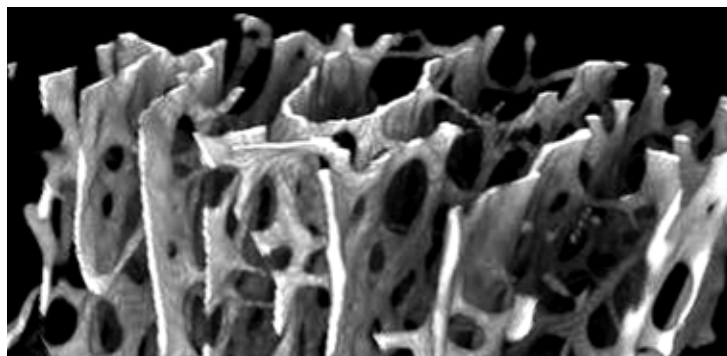
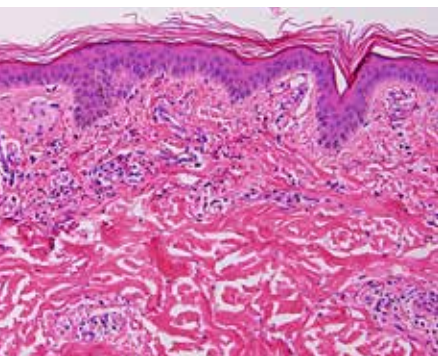


Department of Rheumatic and Immunologic Diseases

Cleveland Clinic Orthopaedic & Rheumatologic Institute



Rheumatic and Immunologic Care

9th Annual Basic and Clinical Immunology for the Busy Clinician

Date TBD

Live Stream

Basic and Clinical Immunology Webcast Series

Increase declarative and procedural knowledge in the field of IMIDs

Biologic Therapies VIII: The Intersection of Rheumatology and Allied Specialties Online Series

Education on immune-based therapies and the latest data on biologic therapeutics

Vasculitis: Multidisciplinary Care for Multisystem Disease Online Monograph

Update on the multisystem nature of vasculitic diseases and the role of multidisciplinary collaboration

For more information about these and other CME opportunities visit ccfcme.org/2RheumCME

The Department of Rheumatic and Immunologic Diseases

Cleveland Clinic is one of the leaders in evaluating and treating patients with an array of complex rheumatic and immunologic diseases — including vasculitis, autoinflammatory diseases, metabolic bone diseases and scleroderma, musculoskeletal conditions as well as primary and secondary immunodeficiency states — in coordination with experts from cardiovascular medicine, infectious disease, orthopaedics, pathology, imaging and surgery.

The department includes centers focused on vasculitis, osteoporosis and metabolic bone disease, arthritis and musculoskeletal care, and clinical immunology. All of the centers have active clinical trials programs that offer multicenter studies as well as single-site investigations in our patient cohorts.

Interdisciplinary Care

To foster the practice of medicine across specialties, the department has in recent years launched multidisciplinary clinics for the care of patients with arthritis and related musculoskeletal disorders, lupus, fibromyalgia, adult autoinflammatory diseases, immunodeficiency diseases, vasculitis, and pulmonary manifestations of rheumatic diseases.

Osteoporosis and Metabolic Bone Disease

The Center for Osteoporosis and Metabolic Bone Disease offers early identification and treatment for patients at risk for osteoporosis, which is the most effective way to increase their bone mass and

reduce the risk of fractures. We offer evaluation with a DEXA (DXA) scan to assess your patients' fracture risk. We combine this information with their medical history and laboratory results to develop a treatment plan that may include:

- Changes in diet and vitamin intake
- An exercise program to stimulate bone formation
- Elimination of risk factors for bone loss
- Use of bone-building medications

If your patients' disease is advanced, or if they have already fractured weak bones, we may integrate pain management and physical therapy into their treatment.

The Center for Osteoporosis and Metabolic Bone Disease also has established a web-based bone density registry that enrolls 16,000 patients annually.

Vasculitis

Patients from around the world with vasculitis, including giant cell arteritis, Takayasu's arteritis and the spectrum of ANCA-associated vasculitic disorders, seek care from our Center for Vasculitis Care and Research. The center cares for one of the world's largest cohorts of patients with ANCA-associated vasculitis, particularly granulomatosis with polyangiitis, and has trained more vasculitis fellows than any other program in the nation.

Researching causes. Our physicians provide early, accurate diagnosis of vasculitis and recommend appropriate treatment using effective combinations of medications. We are actively seeking the cause of these diseases through research that gives your patients access to

the latest treatments available for their conditions.

Preventing complications. Long-term follow-up care is critical to watch for and prevent disease complications as well as medication side effects. No matter what form of vasculitis your patients have, the resources of the entire Cleveland Clinic are available as needed to give them the best possible care.

R.J. Fasenmyer Center for Clinical Immunology

Situated with the department is the R.J. Fasenmyer Center for Clinical Immunology, which focuses on primary and secondary immunodeficiency states as well as rare and unusual autoinflammatory disorders. The center specializes in autoimmune complications of chronic viral illnesses, including HIV, HCV and HBV.

The center's physicians participate in numerous research projects in conjunction with larger efforts, including the AIDS Clinical Trial Group, the USIDNET Patient Registry and the FOCIS Centers of Excellence. The center also is a national leader in continuing medical education.

Systemic Rheumatic Diseases

Our rheumatologists are experienced in treating systemic lupus erythematosus (SLE) and other complicated inflammatory diseases using the latest, most effective treatments available. Due to SLE's multi-organ and multisystem involvement, our rheumatologists collaborate with experienced Cleveland Clinic dermatologists, cardiologists and nephrologists to provide your patients with the comprehensive, well-coordinated care they need.

Rheumatology-Pulmonary Combined Clinic

Our rheumatologists work as a team with pulmonologists in a combined clinic for patients with various autoimmune rheumatic diseases (such as scleroderma, lupus, rheumatoid arthritis, poly/dermatomyositis and Sjogren syndrome) that affect the lung (interstitial lung disease and/or pulmonary hypertension). In this way, we are able to provide seamless interdisciplinary care.

R.J. FASENMYER CENTER FOR CLINICAL IMMUNOLOGY

A collection of live and online CME

- More than 150 free online CME activities
- Access to world-renowned experts
- CME available in multiple formats: live and virtual meetings, interactive online activities, cases, webcasts at ccfcme.org/2RheumCME

Arthritis and Musculoskeletal Center

At Cleveland Clinic, we have a dedicated Arthritis and Musculoskeletal Center that includes an interdisciplinary team of rheumatologists, office-based orthopaedists, and physical medicine and rehabilitation physicians as well as experts throughout the entire Orthopaedic & Rheumatologic Institute who are focused on musculoskeletal care. These include physical and occupational therapists, musculoskeletal radiologists, brace/cast technicians and physician assistants who can help patients with any level of arthritis care they may need. We ensure a correct diagnosis and proper treatment. Whether your patients' arthritis stems from an injury, older age, trouble losing excess weight, or is inflammatory, we can create a comprehensive, integrated and individualized treatment plan that combines the latest medical care to slow further joint damage and help patients remain as active as possible.

Department of Rheumatic & Immunologic Diseases

General Rheumatology

**Feyrouz Al-Ashkar, MD, FACR**

Specialty Interest(s): Adult rheumatology, osteoporosis preventive care, anti-inflammatory diet and lifestyle, plant based nutrition for rheumatic diseases, implementation of shared medical appointments

Location(s): Avon Hospital, Lorain Family Health Center, Richard E. Jacobs Health Center (Avon)

Office: 440.204.7400 **Email:** alashkf@ccf.org

**Adam Brown, MD**

Specialty Interest(s): Vasculitis, rheumatoid arthritis, spondyloarthropathies, myositis, general rheumatology

Location(s): Cleveland Clinic main campus, Twinsburg Family Health and Surgery Center

Office: 216.444.3864 **Email:** browna22@ccf.org

**Matthew Bunyard, MD**

Director of Clinical Operations

Specialty Interest(s): Rheumatoid arthritis, spondyloarthropathies, psoriatic arthritis, gout

Location(s): Cleveland Clinic main campus

Office: 216.445.3460 **Email:** bunyardm@ccf.org

**Scott Burg, DO**

Specialty Interest(s): Osteoarthritis, rheumatoid arthritis, gout, osteoporosis, systemic lupus, golf-related injuries

Location(s): Cleveland Clinic main campus, Hillcrest Hospital

Office: 440.449.0788 **Email:** burgs2@ccf.org

**Cassandra Calabrese, DO**

Specialty Interest(s): Immune-related adverse events, HIV/AIDS, immunization/infection prevention, opportunistic infections

Location(s): Cleveland Clinic main campus

Office: 216.445.6996 **Email:** calabrc@ccf.org

**Soumya Chatterjee, MD, MS, FRCP**

Specialty Interest(s): Scleroderma, rheumatoid arthritis, lupus, myositis

Location(s): Cleveland Clinic main campus

Office: 216.444.9945 **Email:** chattes@ccf.org

**Geraldine P. Dapul, MD, MA**

Specialty areas: Musculoskeletal medicine, arthritis and joint conditions

Location(s): Cleveland Clinic main campus

Phone: 216-444-0581 **Email:** DAPULG@ccf.org

**Shailey Desai, MD**

Specialty Interest(s): General rheumatology including rheumatoid arthritis, osteoarthritis, lupus, osteoporosis

Location(s): Strongsville Family Health and Surgery Center

Office: 440.878.2500 **Email:** desais3@ccf.org

**Howard Epstein, MD**

Specialty: Rheumatoid Arthritis, osteoarthritis, gout, bursitis, tendonitis

Location: Cleveland Clinic main campus

Phone: 216-402-7540 **Email:** epsteih@ccf.org

**Elizabeth File, MD**

Specialty Interest(s): Osteoporosis, metabolic bone disease, general rheumatology

Location(s): Cleveland Clinic main campus, Strongsville Family Health and Surgery Center

Office: 216.444.6575 **Email:** filee@ccf.org

**Carmen Gota, MD**

Director, Fibromyalgia Management Program

Specialty Interest(s): Rheumatoid arthritis, systemic lupus erythematosus, dermatomyositis, psoriatic arthritis, ankylosing spondylitis, fibromyalgia, vasculitis, general rheumatology

Location(s): Cleveland Clinic main campus

Office: 216.444.0564 **Email:** gotac@ccf.org

**Janice Granieri, MD**

Specialty Interest(s): General rheumatology including lupus, rheumatoid arthritis, osteoarthritis, osteoporosis, Sjögren syndrome, soft-tissue rheumatic conditions

Location(s): Willoughby Hills Family Health Center

Office: 440.943.2500 **Email:** graniej@ccf.org

**Rula Hajj-Ali, MD**

Specialty Interest(s): Vasculitis, uveitis, central nervous system vasculitis, systemic inflammatory diseases

Location(s): Cleveland Clinic main campus

Office: 216.444.9643 **Email:** hajjalr@ccf.org

**M. Elaine Husni, MD, MPH**

Vice Chair, Arthritis and Musculoskeletal Center

Director, Clinical Outcomes Research

Specialty Interest(s): Rheumatoid arthritis, osteoarthritis, psoriatic arthritis, use of complementary and alternative medicine for arthritis, health outcomes research

Location(s): Cleveland Clinic main campus

Office: 216.445.1853 **Email:** husnie@ccf.org



Sarah F Keller, MD

Specialty: Osteoporosis, metabolic bone disease, gout, pseudogout and crystalline, arthritis, rheumatoid arthritis, systemic lupus, erythematosus, systemic sclerosis, osteoarthritis

Location: Cleveland Clinic main campus
Phone: 216-445-5880 **Email:** kellers@ccf.org



Emily Littlejohn, DO, MPH

Specialty Interest(s): General rheumatology, systemic lupus erythematosus, SLE disease activity measures, women's health in rheumatology

Location: Cleveland Clinic main campus
Office: (216) 445-5559 **Email:** littlee3@ccf.org



Ana Maheshwari, MD

Specialty Interest(s): General rheumatology, inflammatory arthritis, dermatologic manifestations of rheumatic diseases

Location: Cleveland Clinic main campus
Email: mahesha2@ccf.org



Brian Mandell, MD, PhD

Professor and Vice Chairman, Department of Academic Medicine, Cleveland Clinic Lerner College of Medicine

Specialty Interest(s): Vasculitis, gout, systemic lupus, myositis, multi-system involvement in autoimmune disease

Location(s): Cleveland Clinic main campus
Office: 216.445.6580 **Email:** mandelb@ccf.org



Judith Manzon, MD

Specialty Interest(s): General rheumatology, rheumatoid arthritis, osteoarthritis

Location(s): Avon Hospital, Richard E. Jacobs Health Center (Avon), Strongsville Family Health and Surgery Center
Office: 440.695.4000 **Email:** manzonj@ccf.org



Susan Mathai, MD

Specialty Interest(s): General rheumatology, arthritis, lupus, gout, myositis

Location(s): Richard E. Jacobs Health Center (Avon)
Office: 440.695.4000 **Email:** mathais@ccf.org



Linda Mileti, MD

Specialty Interest(s): General rheumatology including rheumatoid arthritis, spondyloarthropathies, lupus, gout, polymyalgia rheumatica, osteoporosis, osteoarthritis

Location(s): Cleveland Clinic main campus, Beachwood Family Health and Surgery Center
Office: 216.445.8086 **Email:** miletil@ccf.org



Alla Model, MD

Specialty Interest(s): General rheumatology, rheumatoid arthritis, osteoporosis, women's health

Location(s): Independence Family Health Center
Office: 216.986.4000 **Email:** modela@ccf.org



Leila Muhieddine

Specialty: General rheumatology

Locations: Cleveland Clinic main campus, Strongsville Family Health Center

Email: MUHIEDL2@ccf.org



Erin Penn, MD, MS

Specialty Interests: Myositis, scleroderma, cutaneous lupus, psoriatic arthritis

Location: Cleveland Clinic main campus
Office: 216-444-5257 **Email:** penne3@ccf.org



Mathilde Pioro, MD

Specialty Interest(s): Rheumatoid arthritis, spondyloarthropathies, psoriatic arthritis, lupus, connective tissue diseases, myositis, gout, polymyalgia rheumatica, osteoporosis, metabolic bone disease

Location(s): Cleveland Clinic main campus
Office: 216.444.5625 **Email:** piorom@ccf.org



Elisabeth Ray, MD

Specialty Interest(s): General rheumatology, rheumatoid arthritis, spondyloarthropathies, lupus, gout, polymyalgia rheumatica

Location(s): Beachwood Family Health and Surgery Center, Willoughby Hills Family Health Center
Office: 216.444.6575 **Email:** raye@ccf.org



Rochelle Rosian, MD

Director, Regional Rheumatology

Specialty Interest(s): Rheumatoid arthritis, psoriatic arthritis, lupus, connective tissue disease

Location(s): Beachwood Family Health and Surgery Center, Solon Family Health Center
Office: 440.519.6904 **Email:** rosianr@ccf.org



Howard R. Smith, MD

Specialty Interest(s): Arthritis, lupus, Sjogren's syndrome, myositis, polymyalgia rheumatica, scleroderma, ankylosing spondylitis

Location(s): Cleveland Clinic main campus, Beachwood Family Health and Surgery Center, Stephanie Tubbs Jones Health Center
Office: 216.444.4555 **Email:** smithh4@ccf.org



Margaret Tsai, MD

Specialty Interest(s): General adult rheumatology rheumatoid arthritis, lupus, psoriatic arthritis, ankylosing spondylitis, osteoarthritis, osteoporosis, myositis, PMR

Location(s): Avon Hospital, Lorain Family Health Center, Richard E. Jacobs Health Center (Avon)

Office: 440.695.4000 **Email:** tsaim@ccf.org



Patompong Ungprasert, MD, MS

Specialty: Sarcoidosis, mixed connective tissue disease, comorbidities in rheumatic disease, epidemiology, meta-analysis

Location: Cleveland Clinic main campus, Independence Family Health Center

Phone: 216.445.4745 **Email:** Ungprap@ccf.org



Alexandra Villa-Forte, MD, MPH

Specialty Interest(s): Vasculitis, lupus

Location(s): Cleveland Clinic main campus

Office: 216.445.9437 **Email:** villaa@ccf.org



Juliette A. Yedimenko, MD

Specialty Interest(s): General rheumatology, rheumatoid arthritis, spondyloarthropathies, osteoarthritis, polymyalgia rheumatica, myositis, lupus, osteoporosis

Location(s): Cleveland Clinic main campus, Willoughby Hills Family Health Center

Office: 216-444-5627 **Email:** yedimej@ccf.org

Clinical Immunology



Leonard Calabrese, DO

R.J. Fasnemyer Chair in Clinical Immunology
Theodore F. Classen, DO, Chair in Osteopathic Research and Education

Specialty Interest(s): HIV/AIDS, vasculitis, hepatitis C

Location(s): Cleveland Clinic main campus

Office: 216.444.5258 **Email:** calabrl@ccf.org

Osteoporosis and Metabolic Bone Diseases



Abby Abelson, MD

Chair, Department of Rheumatic and Immunologic Diseases

Director of Education, Center for Osteoporosis and Metabolic Bone Diseases

Specialty Interest(s): Osteoporosis, metabolic bone disease, Paget's disease, steroid-induced osteoporosis, transplant-related osteoporosis, low bone mass

Location(s): Cleveland Clinic main campus

Office: 216.444.3876 **Email:** abelsoa@ccf.org



Chad Deal, MD

Head, Center for Osteoporosis and Metabolic Bone Diseases

Specialty Interest(s): Osteoporosis, metabolic bone disease, steroid osteoporosis, connective tissue disease, Paget's disease

Location(s): Cleveland Clinic main campus, Solon Family Health Center

Office: 216.444.6575 **Email:** dealc@ccf.org

Vasculitis Care and Research



Carol Langford, MD, MHS, FACP
Director, Center for Vasculitis Care and Research
Vice Chair for Research, Rheumatic and Immunologic Diseases
Harold C. Schott Chair in Rheumatic and Immunologic Diseases
Specialty Interest(s): Vasculitis
Location(s): Cleveland Clinic main campus
Office: 216.445.6056 **Email:** langfoc@ccf.org



Leonard Calabrese, DO
R.J. Fasenmyer Chair in Clinical Immunology
Theodore F. Classen, DO, Chair in Osteopathic Research and Education
Specialty Interest(s): HIV/AIDS, vasculitis, hepatitis C
Location(s): Cleveland Clinic main campus
Office: 216.444.5258 **Email:** calabrl@ccf.org



Carmen Gota, MD
Director, Fibromyalgia Management Program
Specialty Interest(s): Vasculitis, rheumatoid arthritis, systemic lupus erythematosus, dermatomyositis, psoriatic arthritis, ankylosing spondylitis, fibromyalgia, general rheumatology
Location(s): Cleveland Clinic main campus
Office: 216.444.0564 **Email:** gotac@ccf.org



Rula Hajj-Ali, MD
Specialty Interest(s): Vasculitis, uveitis, central nervous system vasculitis, systemic inflammatory diseases
Location(s): Cleveland Clinic main campus
Office: 216.444.9643 **Email:** hajjalr@ccf.org



Brian Mandell, MD, PhD
Professor and Vice Chairman, Department of Academic Medicine, Cleveland Clinic Lerner College of Medicine
Specialty Interest(s): Vasculitis, gout, systemic lupus, myositis, multi-system involvement in autoimmune disease
Location(s): Cleveland Clinic main campus
Office: 216.445.6580 **Email:** mandelb@ccf.org



Alexandra Villa-Forte, MD, MPH
Specialty Interest(s): Vasculitis
Location(s): Cleveland Clinic main campus
Office: 216.445.9437 **Email:** villaa@ccf.org

Working as a Team

We also have an exceptional team of advanced practice clinicians who participate in our team approach to patient care.



Tiffany Clark, MSN, NP-C



Elizabeth Kirchner, DNP



Denise Costanzo, CNP



Patricia Paczos, PA-C



Kaitlyn Gasser, NSHS, PA-C



Deshawn Jones, NP-C

Cleveland Clinic Children's Rheumatology



Elizabeth Brooks, MD, PhD

Specialty Interest(s): Adolescent and young adult rheumatology, systemic lupus erythematosus, Sjögren syndrome, vasculitis, CRMO (chronic recurrent multifocal osteomyelitis), psoriatic arthritis, spondyloarthropathies, Lyme arthritis, scleroderma, dermatomyositis, Behçet's disease, sarcoidosis, Blau syndrome

Location(s): Cleveland Clinic main campus, Hillcrest Hospital, Independence Family Health Center, Richard E. Jacobs Health Center (Avon), Mentor Medical Office Building

Office Phone: 216.445.3810 **Email:** brookse5@ccf.org



Sirada Panupattanapong, MD, RhMSUS

Specialty Interest(s): Juvenile arthritis, pediatric vasculitis, Kawasaki disease, autoinflammatory and recurrent fever syndromes, uveitis, pediatric lupus, juvenile psoriatic arthritis, juvenile dermatomyositis, ultrasound to diagnose arthritis and guide joint injection procedure, joint pain in children

Location(s): Cleveland Clinic main campus, Independence Family Health Center, Richard E. Jacobs (Avon), Strongsville Family Health Center

Office: 216.445.5837 **Email:** panupas@ccf.org



Angela Byun Robinson, MD, MPH

Specialty Interest(s): Juvenile dermatomyositis, mixed connective tissue disease, overlap connective tissue disorders, systemic lupus erythematosus, scleroderma, Sjögren's Syndrome, juvenile idiopathic arthritis, Henoch-Schonlein purpura, pediatric vasculitis, CRMO (chronic recurrent multifocal osteomyelitis)

Location(s): Cleveland Clinic main campus, Richard E. Jacobs Health Center (Avon), Strongsville Family Health Center

Office: 216.444.7581 **Email:** robinsa8@ccf.org



Andrew Zeft, MD, MPH

Specialty Interest(s): Pediatric vasculitis, auto-inflammatory and recurrent fever syndromes, autoimmune neurologic disease, uveitis, pediatric lupus, juvenile idiopathic arthritis, juvenile dermatomyositis, CRMO (chronic recurrent multifocal osteomyelitis), immunodeficiency associated autoimmune disease

Location(s): Cleveland Clinic main campus, Hillcrest Hospital, Twinsburg Family Health and Surgery Center, Richard E. Jacobs Health Center (Avon)

Office: 216.444.5801 **Email:** zefta@ccf.org

Cleveland Clinic | Consult QD

A blog for physicians and healthcare professionals from Cleveland Clinic. Discover the latest research insights, innovations, treatment trends and more.

Visit consultqd.clevelandclinic.org

Connect with Us

24/7 Referrals

Referring Physician Center and Hotline

855.REFER.123 (855.733.3712) | clevelandclinic.org/Refer123

Live help connecting with our specialists, scheduling and confirming appointments, and resolving service-related issues.



Physician Referral App

Download today at the App Store or Google Play.

Follow Cleveland Clinic's Rheumatologists on Twitter by subscribing to the Rheumatology list on [@CleClinicMD](https://twitter.com/CleClinicMD)

Cleveland Clinic

Every life deserves world class care.

9500 Euclid Ave., Cleveland, OH 44195

The Orthopaedic & Rheumatologic Institute brings together physicians, researchers and engineers to pursue excellence and innovation in the care of patients with joint, bone, muscle, connective tissue and immune disorders. The Orthopaedic & Rheumatologic Institute is one of 26 clinical and special expertise institutes at Cleveland Clinic, a nonprofit academic medical center ranked as one of the nation's top hospitals by *U.S. News & World Report*, where more than 3,900 staff physicians and researchers in 180 specialties collaborate to give every patient the best outcome and experience. clevelandclinic.org

©2020 The Cleveland Clinic Foundation